

LOUISIANA STATE UNIVERSITY AT EUNICE

FACT BOOK – FALL 2002



Louisiana State University – Eunice
Office of Institutional Research
December 2002



GENERAL INFORMATION

History of the University

The University System

The Louisiana State University and Agricultural and Mechanical College System is a multicampus, multipurpose system of higher education serving all of Louisiana. It exerts a major influence on the economic, social, and cultural life of the citizens of the state. The LSU System is composed of eight institutions located throughout the state. Two of these—LSU and the University of New Orleans—are full universities, providing broad areas of undergraduate and graduate instruction as well as extensive research programs. LSU in Shreveport is at present primarily a four-year undergraduate degree-granting campus which offers graduate study only in selected fields. In addition to these, two-year colleges are located at Alexandria and Eunice. The LSU Medical Center, which is also part of the LSU System, has three campuses: two in New Orleans and one in Shreveport. The Center includes the Schools of Medicine, Dentistry, Nursing, and Allied Health Professions, as well as a Graduate School. The Hebert Law Center is located in Baton Rouge.

The LSU Agricultural Center, established in 1972 by the LSU Board of Supervisors as an autonomous element of the LSU System, includes both the Agricultural Experiment Station and the Cooperative Extension Service as well as their statewide agricultural facilities. Administrative headquarters for the Center is located at Baton Rouge. The governing body of the LSU System is a Board of Supervisors appointed by the Governor. The System is headed by a president. The chief administrative officer for each campus is a chancellor.

Establishment of LSU at Eunice

LSU at Eunice is located just southwest of Eunice along Louisiana Highway 755 on a 196-acre tract of land originally belonging to the Arnold LeDoux family, which donated fifty acres for the establishment of the University campus. The University originally purchased an additional fifty acres and later acquired another 95.83 acres for future expansion. The campus is located in Acadia Parish, near the boundaries of Evangeline and St. Landry Parishes, in a rich and fertile section of Southwest Louisiana referred to as “the tri-parish area.”

Louisiana State University at Eunice was authorized by Act 74 of the 1964 Legislature to extend additional educational facilities and opportunities to Southwest Louisiana as a basic and integral part of the LSU System. The LSU Board of Supervisors, acting under the authority granted them by law, set in motion the chain of events leading to the establishment of a two-year commuter college at Eunice, with ground-breaking ceremonies in May, 1966.

Institutional Mission

The basic mission of Louisiana State University and Agricultural and Mechanical College was established by the Louisiana State Legislature in Revised Statute 17-1442: The University is established and maintained to serve the needs of the people of the state. It shall seek to expand the areas of knowledge and understanding through scientific and speculative inquiry and in various ways shall encourage and assist the people of the state to fuller development of their resources. With these ends in view, an adequate program of studies shall be provided in the liberal arts and sciences, in the important vocational and professional subjects including agriculture, business and commerce, education, engineering, law, medicine, and military science and tactics; and additional courses may be provided in such other subjects as shall appear to be worthy of inclusion in the program of the University. Libraries and laboratories adequate for important and effective research and investigation shall be provided and maintained.

Though the primary purpose of the University is to provide and maintain the highest type of instruction in the various important branches of knowledge for graduates of the high school course of study, it shall also offer such opportunities for instruction as may be practicable to persons in the state who are not in residence on any of its campuses.

The purpose of Louisiana State University at Eunice is to serve the needs of its constituency in keeping with the mission of the overall Louisiana State University System. Specifically, LSUE seeks to provide programs and services normally associated with a comprehensive community college. Accordingly, the role, scope, and mission statement for LSU at Eunice, as adopted by the Louisiana Board of Regents in October of 1993, is as follows:

Louisiana State University at Eunice (LSUE), a member of the Louisiana State University System, is categorized by the Southern Regional Education Board as a Two-Year I College serving southwest Louisiana. As an open-admissions community college, LSUE serves the educational needs of this population primarily through a select number of associate degree programs in business and office occupations, computer information technology, criminal justice, fire science, nursing, radiologic technology, and respiratory care technology. LSUE is designated as a statewide provider of undergraduate instruction in fire science outside of metropolitan New Orleans. The institution offers courses and associate of arts and science degrees for students who wish to transfer to a senior college. LSUE serves as a multi-purpose resident center of LSU and A&M College.

LSUE should continue to serve the educational and cultural needs of its service area by offering necessary certificate and associate degree programs. Since high quality technical programs are crucial to economic development, the institution should continue to expand its relationship with local business and industry to identify area workforce needs. The institution should also work closely with four-year colleges in the area to further increase matriculation opportunities for its students. Public service activities should be undertaken to meet the needs of the service area and to raise the level of education and improve the quality of life for area citizens.

Philosophy

Louisiana State University at Eunice is committed to the principle that individuals should have the opportunity to develop themselves through education commensurate with their capabilities and interests. To this end, the University strives to provide educational programs and related services which reflect and respond to the diversified interests, aptitudes, talents, needs, and goals of its constituency.

Goals

To fulfill its mission, Louisiana State University at Eunice is committed to achieving the following goals:

1. Students complete associate degree or certificate programs prepared to enter the work force.
2. Students complete the first two or more years of baccalaureate study prepared to transfer to four-year institutions to complete their degrees.
3. Students fulfill general education and continuing education needs through a variety of educational offerings at various teaching sites and times.
4. Students who need developmental instruction acquire the knowledge and skills to prepare them for collegiate study.
5. Students receive support and assistance in reaching academic, personal, career, and employment goals.
6. Students participate in extracurricular activities to meet personal, artistic, or intellectual interests.
7. Students find facilities and resources adequate in classrooms, laboratories, the library, and recreational areas.
8. Citizens of LSUE's service area find educational opportunities to meet changing employment needs.
9. Citizens experience cultural enrichment and personal development through participating in programs offered as a community service.

In pursuing these goals, Louisiana State University at Eunice is committed to maintaining the highest academic and professional standards in all of its educational and related programs and services. To this end, the University will endeavor to recruit the best qualified personnel available for its various programs and will encourage the professional growth of administrators, faculty, and staff as a continuous process.

GENERAL INFORMATION

Institutional Overview

Academic Offerings

Louisiana State University at Eunice offers a wide range of courses and programs for the student wishing to pursue a four-year degree as well as for the student wishing to prepare for a career in two years or less of study. Louisiana State University at Eunice is accredited by the Commission on Colleges of the Southern Association of Colleges and Schools to award associate degrees.

Students pursuing a four-year degree can ordinarily complete at least the first two years of their program at LSUE. Courses taken by these students are usually the same in number, title, credit, and content as those offered on the Baton Rouge campus. Students pursuing the baccalaureate degree may major in such areas as business administration, education, humanities, social sciences, agriculture, engineering, natural sciences, and pre-professional preparation.

For students seeking career preparation in only two years, LSU at Eunice offers associate degree programs in computer information technology, criminal justice, fire science, general studies, management, nursing, office administration, paralegal studies, public and industrial security, radiologic technology, and respiratory care. Although most of these programs are designed primarily to prepare students for immediate employment, credits earned in them are usually acceptable for transfer if the student later decides to work toward a four-year degree.

Developmental Studies Program

The Developmental Studies Program coordinates courses and support services designed to prepare students for college-level studies. The program consists of writing skills (English 0001), quantitative skills (Mathematics 0001, 0002, 0007), reading skills (Developmental Studies 0008), and academic and personal skills (Developmental Studies 0004). Students are placed in the courses according to their levels of proficiency in each academic area and may take one or more such courses. In addition, the Developmental Studies Program includes tutoring, counseling, and academic advisement services.

Students whose ACT scores indicate they need development work are invited to a special preregistration orientation and testing session for further evaluation and to plan an initial program of courses. During each semester, students in the program are required to meet with their academic advisors at least three times to discuss their current work and plan for subsequent semesters.

Through these various components, the Developmental Studies Program helps students gain the preparation they need to achieve their educational goals in college.

my.LSUE

The my.LSUE system provides students with anytime-anywhere access to key university information and services. The system can be accessed via any Internet-connected computer or via many custom kiosks located throughout the campus. Using my.LSUE, you can:

- send and receive electronic mail
- access library databases and indexes
- access and verify demographic and program information including your address, tele-phone, advisor, major, academic status, and other information
- view your current semester schedule with mid-term and final grades when posted
- check for any outstanding "holds" that may prevent you from registering for classes
- estimate your grade-point average based on the grades you expect to earn in the current semester and view the impact on your overall GPA

- view your academic transcript on-line
- view and print a fee bill showing your tuition and fees
- register for classes on-line, including the ability to drop and add courses
- change your Personal Identification Number (PIN number) used to access my.LSUE
- view and interact with on-line course areas which are created for each course section taught at the University
- access instructor-posted materials including lecture notes, syllabi, and interactive discussion areas
- check current local weather conditions
- access the LSUE on-line bookstore to view both new and used book prices

my.LSUE account information is mailed to new students as they apply for admission. Electronic mail accounts will not become active until students have registered for classes and paid fees. Current students may pick up their Login and PIN information at any time from the Office of Information Technology located in Manual Hall, Room 105.

Undergraduate Research Summer Institute

With support from the LSUE Foundation, the Undergraduate Research Summer Institute (URSI) provides an opportunity for LSUE faculty/student teams to carry out investigational activities which will enrich the experience for the talented undergraduate, while also providing LSUE faculty with a professional development opportunity on a discipline-specific topic of interest to them.

Course Articulation Agreements with Louisiana Technical College Campuses

Louisiana State University at Eunice has course articulation agreements with four campuses in the Louisiana Technical College System (LTCS). These agreements identify specific courses that will transfer between the four LTCS campuses and LSUE. For more information on these transfer agreements, contact the LSUE Division of Business and Technology.

Campus Facilities

The campus at Louisiana State University at Eunice consists of a 196-acre tract of land, which extends along Louisiana Highway 755 southwest from downtown Eunice.

LIBRARY The Arnold LeDoux Library provides a variety of informational resources for use by students, faculty, and the community. Those resources include a book collection of more than 100,000 volumes, periodicals, and audio-visual materials varied in coverage and format. Developed to meet the needs of academic programs offered at LSUE, the collection covers many fields of interest.

The Library is also a depository for both state and federal documents. Louisiana documents are included in a special Louisiana collection housed on the first floor. The book, periodical, and document collections of the Library can be accessed through automated indexing services. New library users are provided assistance and instruction in how to use the library and its resources.

Photocopiers, microfiche readers and printers, and personal computers are provided for the students' convenience.

SCIENCE BUILDING The administrative offices of the Chancellor and the Vice Chancellor for Business Affairs are housed in the Science Building. This building has specially designed rooms equipped for lectures, demonstrations, and laboratory work in the physical and biological sciences. In addition to regular classrooms and faculty and staff offices, the building contains a large amphitheater-classroom and several research laboratories for use by both faculty and students.

GLADNEY L. MANUEL, SR. HALL Gladney L. Manuel, Sr. Hall houses the Office of Academic Affairs, the Registrar's Office, the Office of Admissions, the Division of Business and Technology, and the Division of Liberal Arts. Among the educational facilities available in this building are a distance learning laboratory, computer laboratories, complete ceramics and design studios for art, and a tiered lecture-auditorium.

HEALTH TECHNOLOGY BUILDING The Health Technology Building, which opened in fall 1997, houses programs in nursing, radiologic technology, and respiratory care. The 43,700-square-foot facility includes the Office of the Division of Nursing and Allied Health, classrooms, health care laboratories, a 250-seat auditorium with satellite TV connections, a computer laboratory, and an audiovisual laboratory.

ACADIAN CENTER Fall 1971 marked the opening of the Acadian Center. Although planned for multipurpose use, its versatility does not hamper the beauty of the building, the name of which reflects the rich Acadian heritage of the tri-parish area. Practicality and comfort are skillfully blended in the Acadian Center, which was designed to serve the students, faculty, and staff of LSUE.

Members of the LSUE community may enjoy fireside chats in the comfortable lounge area, obtain food service ranging from snacks to full meals, participate in the activities of the games area, relax in the television-viewing area, or spend time between classes enjoying one of the prime advantages of a commuter college, the friendly atmosphere founded on familiar faces and a wide circle of acquaintances.

The Acadian Center also houses the Office of Student Affairs, the Book Store, the Office of Financial Aid, Campus Security, and the Student Government Association office. Banquet service for smaller groups is available in a special meeting room, while the main dining area, which normally seats approximately 400 people, may be used to accommodate up to 500 people at larger banquets.

HEALTH AND PHYSICAL EDUCATION BUILDING Included in the Health and Physical Education Building are a gymnasium with a standard-size basketball court plus cross-courts; a heated swimming pool; an indoor archery range that can also be used for golf driving; an inlaid putting surface; and a weight training and conditioning room. Besides basketball, the court area is designed for such activities as indoor tennis, badminton, volleyball, and gymnastics. The facilities are used for instruction but are also available at scheduled times for recreational use by students and faculty.

The **BAPTIST COLLEGIATE MINISTRY** opened in the 1976 spring semester. Its major purpose is the spiritual enrichment of students. This is accomplished through Bible studies, inspirational speakers, and a variety of special events with spiritual growth as their aim. The BCM also offers a place for students to play ping pong, listen to music, find a quiet corner in which to study, or just talk with friends between classes. The building has a comfortable recreation-conference area complete with fireplace, kitchen facilities, a director's office, and a television room. Sponsored jointly by the Louisiana Baptist Convention and the Acadia Baptist Association, the BCM invites students of all faiths to share in its programs.

The **CATHOLIC STUDENT CENTER**, which opened in the fall of 1979, has a chapel and commons area, kitchen facilities, and quarters for the resident chaplain. The center is open Monday through Friday from 7:30 a.m. to 5 p.m. and Sunday evening for Mass. The center houses a variety of student activities, retreats, counseling services, study programs in scripture and theology, and a social services program.

Campus Publications

In addition to this catalog, Louisiana State University at Eunice publishes a Faculty Handbook, a Student Handbook, and various LSUE brochures. Both students and faculty assist in the editing of a campus newspaper, *The Bayou Bengal*.

University Services

Since Louisiana State University at Eunice is an integral part of the surrounding community, many cooperative programs have been developed, and faculty and staff members are available as speakers for area schools, clubs, and organizations. The University sponsors various cultural, civic, and informational programs such as visiting lecturers, artists and concert series, faculty lectures, and occasional book and art exhibits. Whenever possible, the public is invited to share in the educational, informational, and cultural activities of the campus.

LSUE DISTRICT RALLY ASSOCIATION Louisiana State University at Eunice serves as the host and testing center for literary, speech, and drama rallies held each spring for high school students in a nine-parish area. LSUE

presents scholarships to the highest scoring student in each of the forty-six literary categories and three speech categories.

FOREIGN LANGUAGE FESTIVAL Louisiana State University at Eunice is also the site of an annual festival sponsored by the Tri-Parish Foreign Language Teachers' Council. Participating high school students are given the opportunity to compete in several declamation categories. Certificates are awarded to the winners of the festival.

Housing

Facilities are normally available in the community for students who desire to live near the University. Such housing is not under the supervision of the University.

Traffic Regulations

All students must register motor vehicles for permits to park and operate them on campus. Students are held responsible for knowing and obeying campus traffic regulations.

Drug-Free Campus Policy

It is the policy of LSU at Eunice to maintain a drug-free campus environment. Both the workforce and students shall remain drug-free and free of other substance abuse. The illegal use, possession, dispensation, manufacture, or sale of controlled substances and alcohol abuse by students while on campus is prohibited. Students who are convicted of violating the policy will be subject to disciplinary action within 30 days, including suspension or expulsion from the University. Anyone found to have violated the policy is also subject to referral to civil authorities as appropriate. The University will assist employees and students seeking rehabilitation by providing names, addresses, and telephone numbers of substance abuse facilities. Alcohol and drug awareness programs will also be presented. For the complete policy, including provisions affecting all employees, inquire in the Office of Student Affairs.

Public Safety

LSUE is dedicated to preserving a peaceful and safe campus environment. Students, faculty, staff, and visitors are to report all crimes or suspicious activity to the Campus Security Office, the Vice Chancellor for Student Affairs, or any other administrative office. The Campus Security Office is located in the Acadian Center, Room A-101. In order to report a fire, accident, or emergency using a phone in any campus office, dial 9-911 (for assistance from off campus agencies) and then report the emergency on campus by calling ext. 225 or 218 or by contacting any administrative office. After regular business hours, emergencies should be reported on campus by dialing 225. Guards assigned to patrol areas throughout the campus will respond promptly to any call and are in direct radio contact with the municipal fire department, emergency medical services, and police officials. Campus Security consists of four full-time guards. Qualifications of guards meet the provisions of Louisiana law.

Campus Security provides a limited range of services, including accident investigations, emergency services, and crime prevention services. Administrative responsibility for security service for the campus rests with the office of the Vice Chancellor for Student Affairs.

Campus Security has jurisdiction on all University facilities, premises, and property. Campus Security reports the number and types of crimes monthly to the LSU Board of Supervisors. These figures are published annually, as a matter of public record, and may be obtained from the Campus Security Office or the Vice Chancellor for Student Affairs.

The LSUE Foundation

The Louisiana State University at Eunice Foundation is a non-profit, tax exempt organization formed in 1992 to support programs and activities designed to advance and promote LSUE. The foundation accepts contributions from individuals, business and industry, professional groups, and philanthropic organizations.

The LSUE Foundation was established in recognition that state support does not provide all the necessary resources to fund quality educational programs at public higher education institutions. The foundation seeks funding so that it may provide the margin of excellence for the educational and other programs of the institution.

Funds raised by the foundation are used to enhance the services and operations of the campus to include general institutional development, community relations, faculty support, student support, and other activities.

Contributions to the LSUE Foundation are tax deductible. Contributors may designate that their donation be used for student scholarships, institutional development, or general foundation support. The foundation publishes an annual report detailing receipts, expenditures, and activities. Additional information regarding the LSUE Foundation is available from Sharon Leonards, Executive Director, LSUE Foundation, P.O. Box 1551, Eunice, LA 70535, phone (337) 550-1257.

Friends of the Library

The Friends of the Library, a subdivision of the LSUE Foundation, is a support group of individuals from throughout the campus and the communities of LSUE's service area. Their support is offered in many ways: volunteer staffing for events such as exhibits or book sales, loan of displays or equipment, and financial support to extend the resources and services of the Library beyond the limits of its state budget allocation. Memberships range from \$10 for contributing members to \$500 for lifetime members. Further information is available from the LeDoux Library.

Office of Alumni Affairs

The Office of Alumni Affairs is compiling a listing of all former LSUE students so that they can be notified of alumni activities and developments on campus. Alumni who want to update their address information can contact the Office of Alumni Affairs toll free inside Louisiana, 1-888-FOR-LSUE, ext. 205, or locally, 550-1205.

Continuing Education

LSU at Eunice offers a variety of both credit and non-credit continuing education programs. Credit evening classes designed to meet the continuing education needs of students and community members are scheduled each semester on the LSUE campus and at off-campus locations. In addition, LSUE sponsors non-credit short courses and workshops as well as a summer enrichment program for children. Details are available from the Office of Continuing Education.

Distance Learning

Manuel Hall and the Health Technology Building house distance learning laboratories connected with other university campuses in Louisiana through fully interactive compressed video technology. Classes can originate at any campus and be attended by students on any other campus. Students can communicate with one another and with the instructor using two-way audio and video. The distance learning laboratory enhances the educational opportunities available to LSUE students and all other Louisiana students. In addition to sending and receiving freshman and sophomore courses, LSUE also receives upper-level undergraduate and graduate courses from other universities in such fields as education, library science, horticulture, and other topics. For more information, contact the Office of Continuing Education.

INSTITUTIONAL AND PROFESSIONAL ACCREDITATION

INSTITUTIONAL ACCREDITATION

Louisiana State University at Eunice is a member of the Southern Association of Colleges and Schools. Founded in 1895, the association is voluntary, nonprofit, and nongovernmental. Membership is open to public and private educational institutions in eleven southern states and Latin America.

LSUE is accredited by the Commission on Colleges of the Southern Association of Colleges and Schools to award associate degrees.

PROFESSIONAL ACCREDITATION

Division of Business and Technology – ISO 9002

Division of Nursing and Allied Health

- Associate Degree in Nursing – National League of Nursing
- Associate Degree in Radiologic Technology – Joint Review Committee on Education in Radiologic Technology
- Associate Degree in Respiratory Care – Joint Review Committee for Respiratory Therapy Education

ADMINISTRATION OF THE UNIVERSITY

Board of Supervisors

This list reflects Board membership and their term expiration at the time of publication.

Ronald R. Anderson, *Ethel, Chair* 2002
 Roger H. Ogden, *New Orleans, Vice Chair* 2004
 Tony Acosta, *New Orleans* 2002
 Kent Anderson, *Monroe* 2002
 Dr. Jack A. Andonie, *Metairie* 2006
 Bernard E. Boudreaux, Jr., *New Iberia* 2004
 Victor Bussie, *Baton Rouge* 2000
 Charles V. Cusimano, *Metairie* 2006
 Stanley J. Jacobs, *New Orleans* 2002
 Laura A. Leach, *Lake Charles* 2000
 William W. Rucks, IV, *Lafayette* 2004
 Perry Segura, *New Iberia* 2000
 Virginia K. Shehee, *Shreveport* 2004
 C. Stewart Slack, *Shreveport* 2006
 Charles S. Weems, III, *Alexandria* 2002
 Roderick K. West, *New Orleans* 2006
 William L. Jenkins, *President of the LSU System; Secretary to the Board*
 Carleen N. Smith, *Administrative Secretary*

Executives of the University System

William L. Jenkins, Ph.D., *President*
 Dudley B. Fricke, M.S., *Special Assistant to the President*
 Patrick Gibbs, M.B.A., *Vice-President for Property, Facilities, and Administration*
 Robert H. Rasmussen, Ed.D., *Executive Assistant to the President*
 William L. Silvia, Jr., M.P.A., *Executive Vice-President for Administration and Finance*
 Marilyn Zimny, Ph.D., *Interim Vice-President for Academic Affairs and
 TechnologyTransfer*

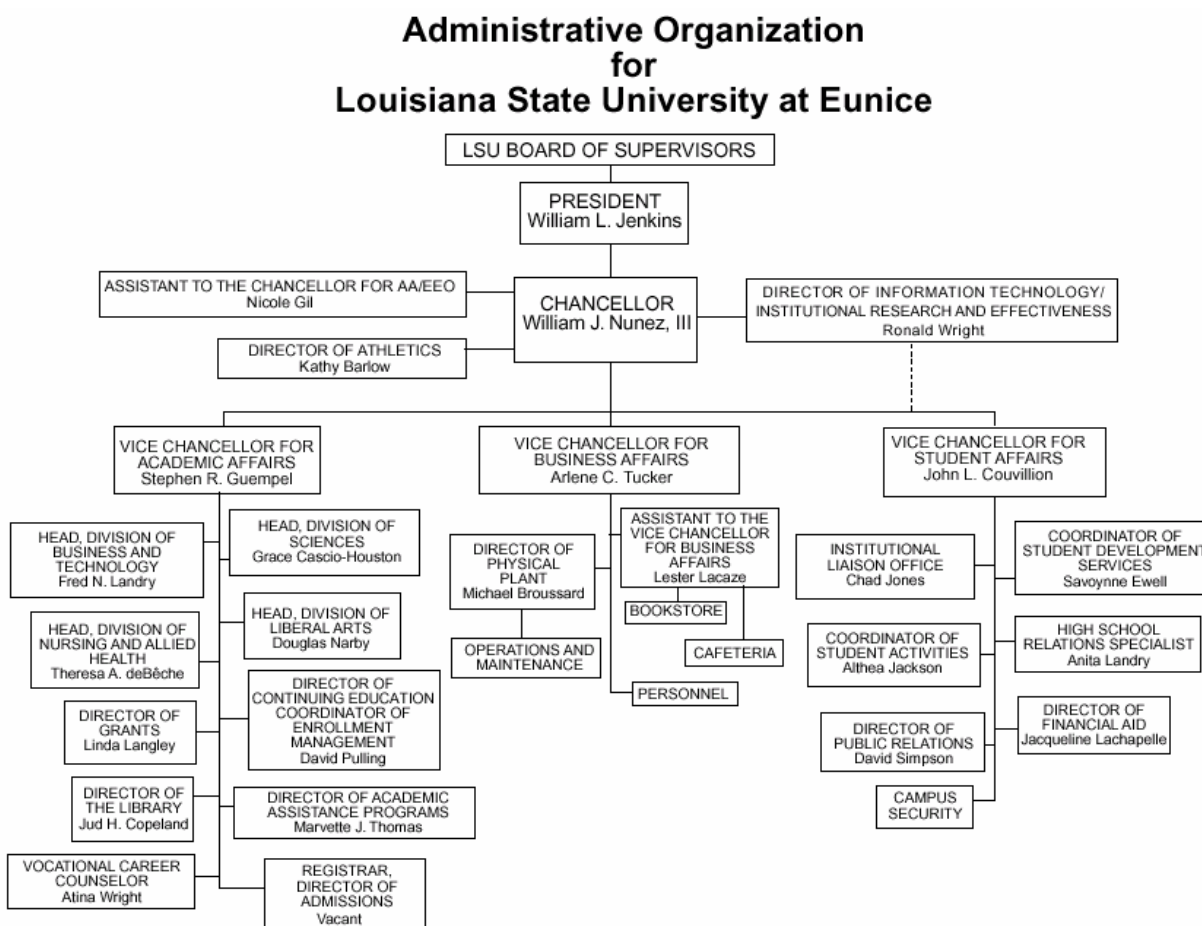
Executives of LSU at Eunice

William J. Nunez, III, Ph.D., *Chancellor*
 John L. Couvillion, Ph.D., *Vice Chancellor for Student Affairs*
 Stephen R. Guempel, Ph.D., *Vice Chancellor for Academic Affairs*
 Arlene C. Tucker, M.B.A., *Vice Chancellor for Business Affairs*

LSUE Administrative Council

William J. Nunez, III, Ph.D., *Chancellor*
 Michael Broussard, M.P.A., *Director of Physical Plant*
 Vacant, *Registrar and Director of Admissions*
 Grace Cascio-Houston, Ph.D., *Head, Division of Sciences*
 John L. Couvillion, Ph.D., *Vice Chancellor for Student Affairs*
 Theresa A. deBêche, M.N., *Head, Division of Nursing and Allied Health*
 Nicole Gil, J.D., *Special Assistant to the Chancellor for AA/EEO*
 Stephen R. Guempel, Ph.D., *Vice Chancellor for Academic Affairs*
 Lester Lacaze, B.S., *Assistant to the Vice Chancellor for Business Affairs*
 Jacqueline Lachapelle, B.S., *Director of Financial Aid*
 Fred N. Landry, Ph.D., *Head, Division of Business and Technology*
 Douglas Narby, Ph.D., *Head, Division of Liberal Arts*
 David Pulling, M.A., *Director of Continuing Education*
 David Simpson, Ph.D., *Director of Public Relations*
 Marvette J. Thomas, Ed.D., *Director of Academic Assistance Programs*
 Arlene C. Tucker, M.B.A., *Vice Chancellor for Business Affairs*
 Ronald Wright, M.Ed., *Director of Information Technology,
 Institutional Research, and Effectiveness*
 Faculty Senate Chair, *ex officio*
 Staff Senate Chair, *ex officio*

ADMINISTRATION – ORGANIZATIONAL CHART



November 15, 2002

DEGREES

DEGREES OFFERED – Fall 2002

CERTIFICATE PROGRAMS

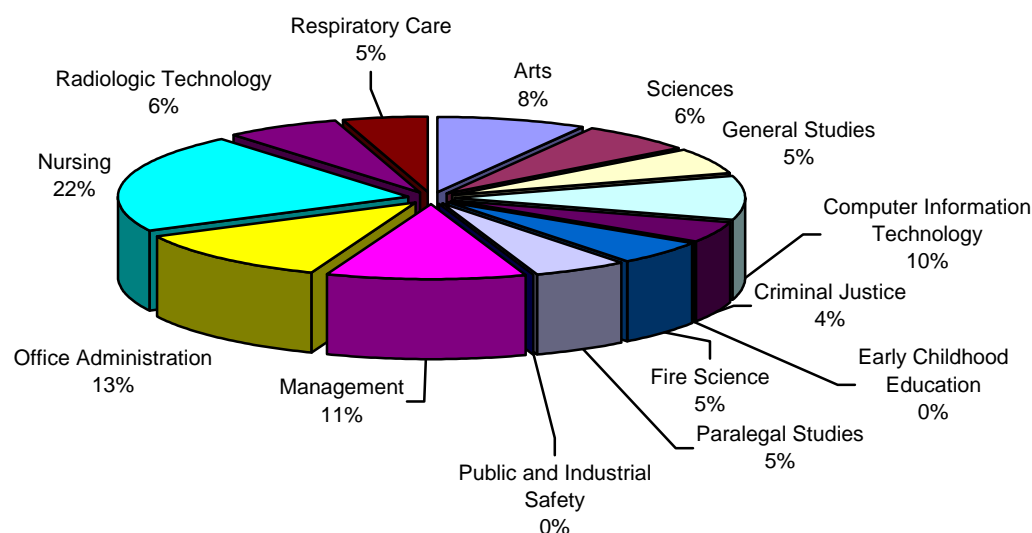
Arson Investigation
Fire Science
Office Practices and Procedures
Diagnostic Medical Sonography

ASSOCIATE DEGREE PROGRAMS

Associate of Arts
Associate of Science
Associate of General Studies
Associate of Computer Information Technology
Associate of Criminal Justice
Associate of Early Childhood Education
Associate of Fire Science
Associate of Paralegal Studies
Associate of Public and Industrial Security
Associate of Management
Associate of Office Administration
Associate of Nursing
Associate of Radiologic Technology
Associate of Respiratory Care

DEGREES

DEGREES AWARDED – 2000/2001



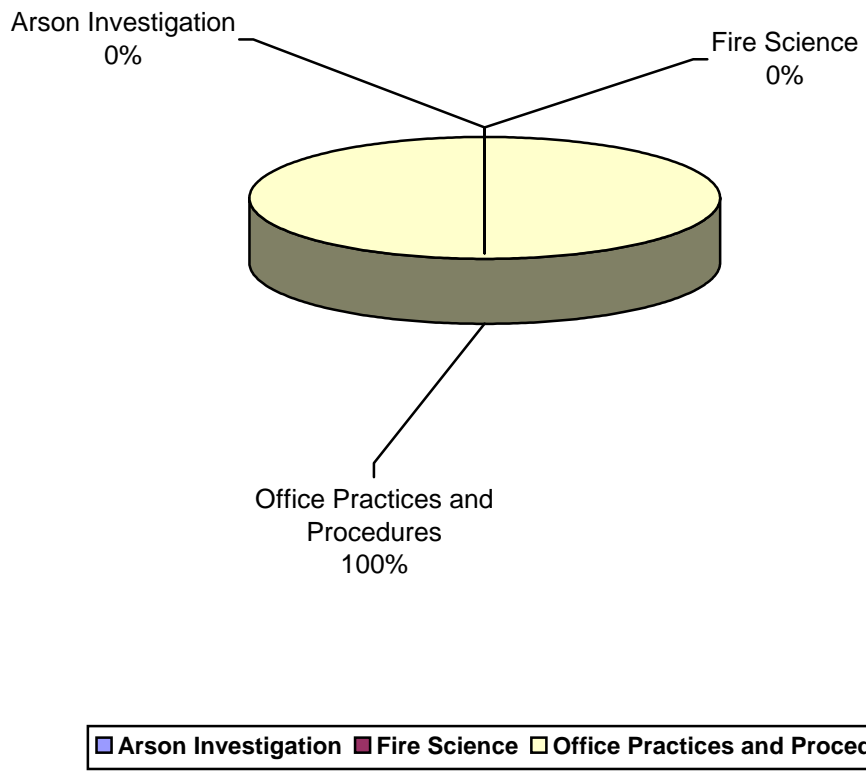
| | |
|------------------------------|---------------------------------|
| Arts | Sciences |
| General Studies | Computer Information Technology |
| Criminal Justice | Early Childhood Education |
| Fire Science | Paralegal Studies |
| Public and Industrial Safety | Management |
| Office Administration | Nursing |
| Radiologic Technology | Respiratory Care |

| | | | |
|---------------------------------|----|--------------------------------|----|
| Arts | 23 | Paralegal Studies | 14 |
| Sciences | 18 | Public and Industrial Security | 0 |
| General Studies | 15 | Management | 31 |
| Computer Information Technology | 27 | Office Administration | 33 |
| Criminal Justice | 12 | Nursing | 59 |
| Early Childhood Education | 0 | Radiologic Technology | 18 |
| Fire Science | 15 | Respiratory Care | 13 |

* Source: Louisiana Board of Regents Reporting System

DEGREES

CERTIFICATES AWARDED – 2000/2001



| | |
|--------------------------------|---|
| Arson Investigation | 0 |
| Fire Science | 0 |
| Office Practice and Procedures | 5 |

* Source: Louisiana Board of Regents Reporting System

DEGREES

ASSOCIATE DEGREES AWARDED: 1995-1996 / 2000-2001

| Degree | 00/01 | 99/00 | 98/99 | 97/98 | 96/97 | 95/96 | Six Year Total |
|---------------------------------|-------|-------|-------|-------|-------|-------|----------------|
| Arts | 23 | 17 | 7 | 14 | 7 | 11 | 79 |
| Sciences | 18 | 16 | 15 | 22 | 24 | 37 | 132 |
| General Studies | 15 | 21 | 19 | 17 | 20 | 14 | 106 |
| Computer Information Technology | 27 | 17 | 14 | 14 | 4 | 11 | 87 |
| Criminal Justice | 12 | 20 | 4 | 11 | 14 | 8 | 69 |
| Early Childhood Education | 0 | 0 | 0 | 0 | 0 | 0 | 0 |
| Fire Science | 15 | 21 | 27 | 31 | 15 | 13 | 122 |
| Paralegal Studies | 14 | 11 | 7 | 6 | 0 | 0 | 38 |
| Public and Industrial Safety | 0 | 0 | 0 | 0 | 0 | 1 | 1 |
| Management | 31 | 22 | 28 | 25 | 17 | 10 | 133 |
| Office Administration | 33 | 38 | 39 | 37 | 31 | 37 | 215 |
| Nursing | 59 | 55 | 56 | 61 | 52 | 57 | 340 |
| Radiologic Technology | 18 | 24 | 20 | 39 | 15 | 14 | 130 |
| Respiratory Care | 13 | 15 | 14 | 10 | 6 | 6 | 64 |

CERTIFICATES AWARDED: 1995-1996 / 2000-2001

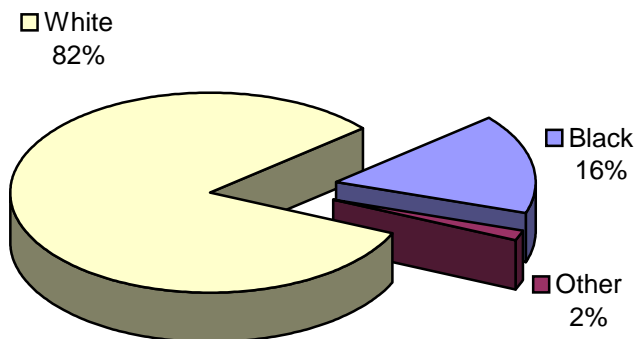
| Degree | 00/01 | 99/00 | 98/99 | 97/98 | 96/97 | 95/96 | Five Year Total |
|---------------------------------|-------|-------|-------|-------|-------|-------|-----------------|
| Arson Investigation | 0 | 1 | 5 | 7 | 0 | 3 | 16 |
| Fire Science | 0 | 2 | 5 | 3 | 0 | 0 | 10 |
| Office Practices and Procedures | 5 | 1 | 4 | 1 | 3 | 3 | 17 |

* Source: Louisiana Board of Regents Reporting System

DEGREES

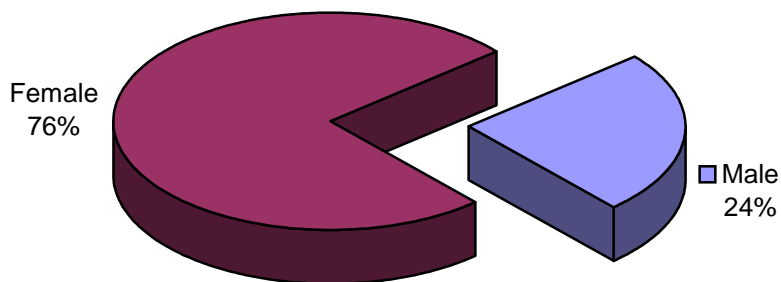
BREAKDOWN BY RACE AND GENDER 2000/2001

Associate Degrees Awarded by Race



| | |
|-------|-----|
| Black | 48 |
| Other | 5 |
| White | 246 |

Associate Degrees Awarded by Gender



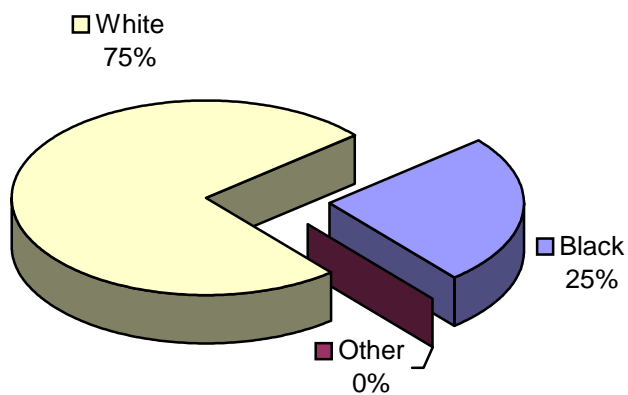
| | |
|--------|-----|
| Male | 73 |
| Female | 226 |

* Source: Louisiana Board of Regents Reporting System

DEGREES

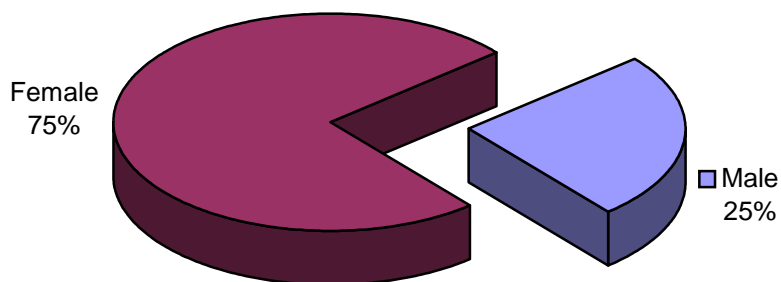
BREAKDOWN BY RACE AND GENDER 2000/2001

Certificates Awarded by Race



| | |
|-------|---|
| Black | 1 |
| Other | 0 |
| White | 3 |

Certificates Awarded by Gender



| | |
|--------|---|
| Male | 1 |
| Female | 3 |

* Source: Louisiana Board of Regents Reporting System

STUDENTS

ENROLLMENT SUMMARY – FALL 2002

| | Males | Females | All Students |
|------------|-------|---------|--------------|
| Age | | | |
| 20 or less | 476 | 910 | 1386 |
| 21-25 | 164 | 458 | 622 |
| 26-30 | 85 | 262 | 347 |
| 31-35 | 69 | 181 | 250 |
| 36-40 | 47 | 142 | 189 |
| 41 or over | 67 | 283 | 350 |

Average Age - 26.21

Race

| | | | |
|-------|-----|------|------|
| Black | 138 | 599 | 737 |
| White | 757 | 1575 | 2332 |
| Other | 13 | 62 | 75 |

Reported ACT Scores

| | | | |
|-------------|-----|-----|------|
| 1-10 | 1 | 6 | 7 |
| 11-15 | 130 | 401 | 531 |
| 16-20 | 320 | 841 | 1161 |
| 21-25 | 172 | 304 | 476 |
| 26 and over | 21 | 31 | 52 |

Average ACT Score - 18.10

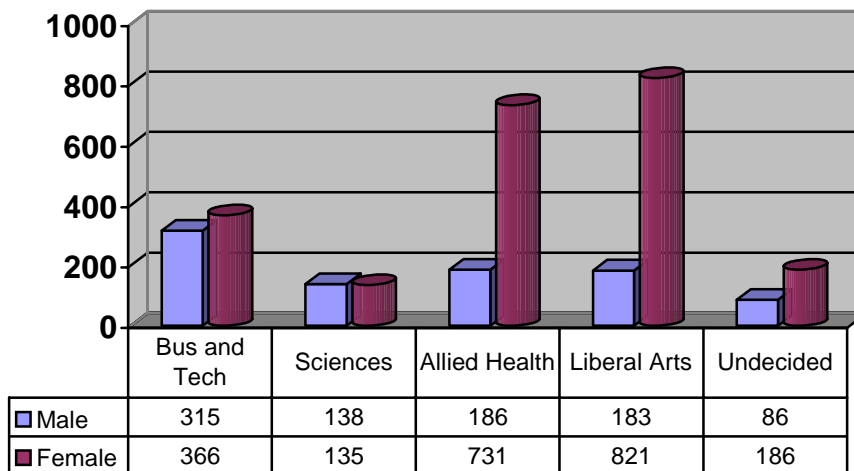
College Major

| | | | |
|---------------|-----|-----|------|
| Business | 315 | 366 | 681 |
| Sciences | 138 | 135 | 273 |
| Allied Health | 186 | 731 | 917 |
| Liberal Arts | 183 | 821 | 1004 |
| Undecided | 86 | 183 | 269 |

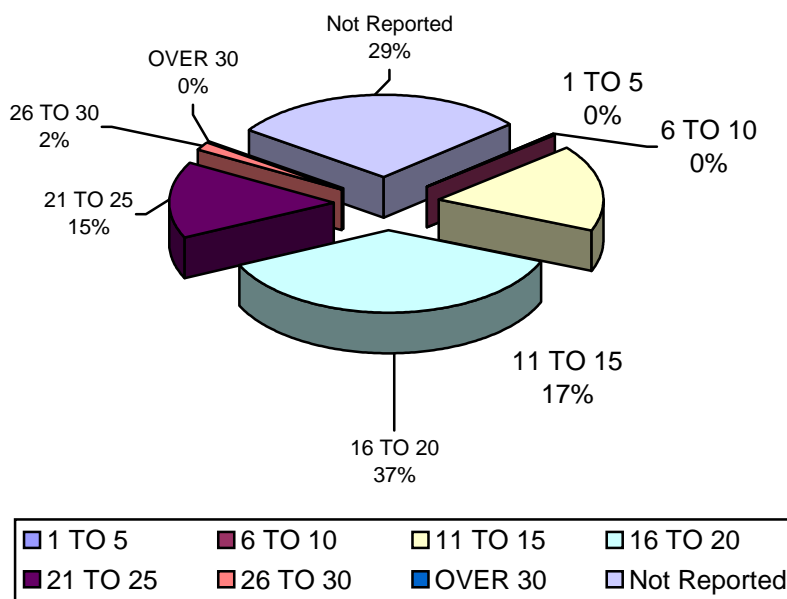
STUDENTS

ENROLLMENT – FALL 2002

BREAKDOWN BY DIVISION AND GENDER

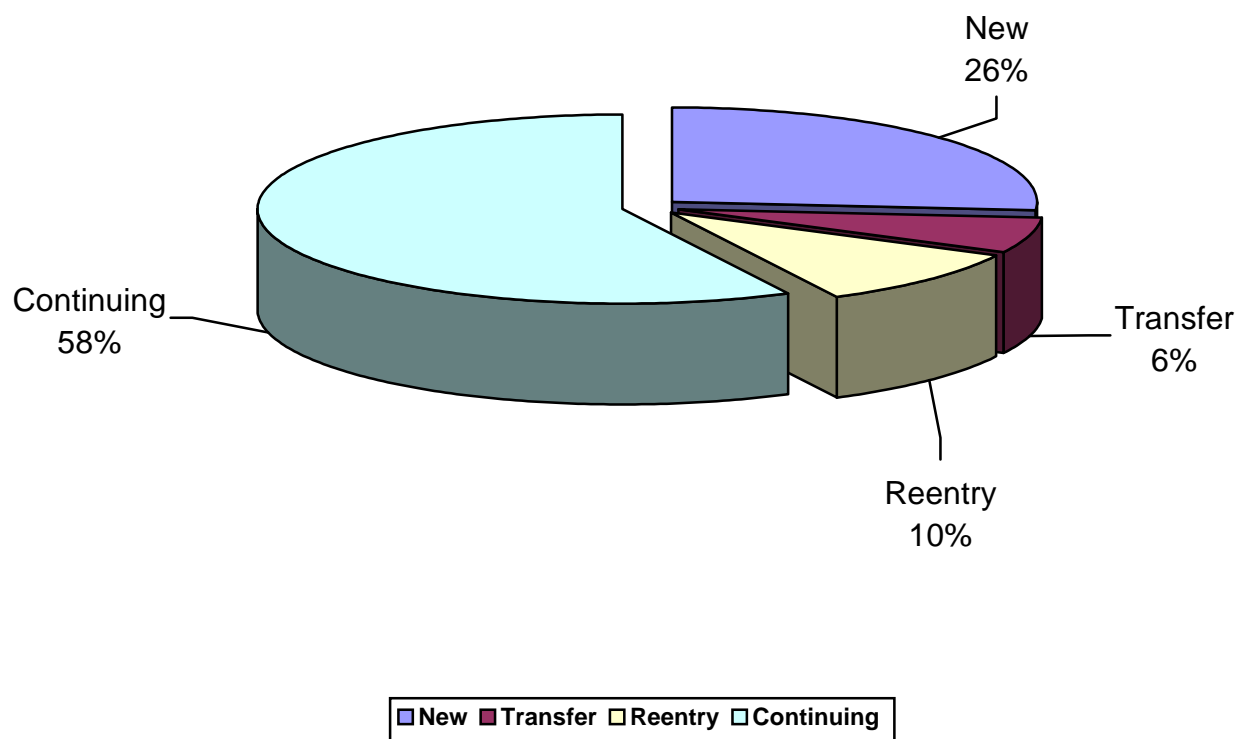


Enrollment Breakdown by ACT Score



STUDENTS

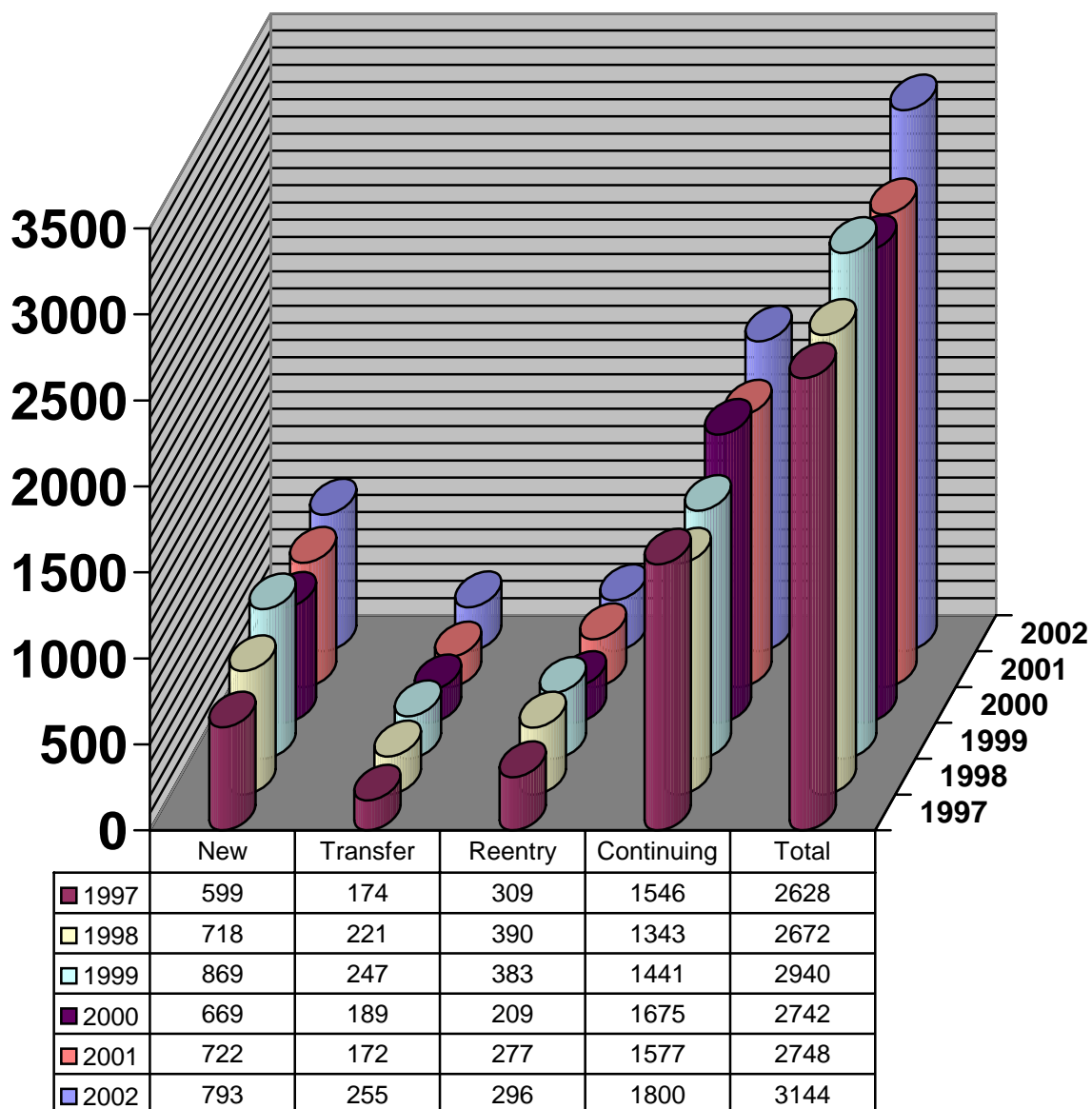
ENROLLMENT BY ENTRY STATUS – FALL 2002



| | |
|--------------|-------------|
| New | 793 |
| Transfer | 255 |
| Reentry | 296 |
| Continuing | 1800 |
| TOTAL | 3144 |

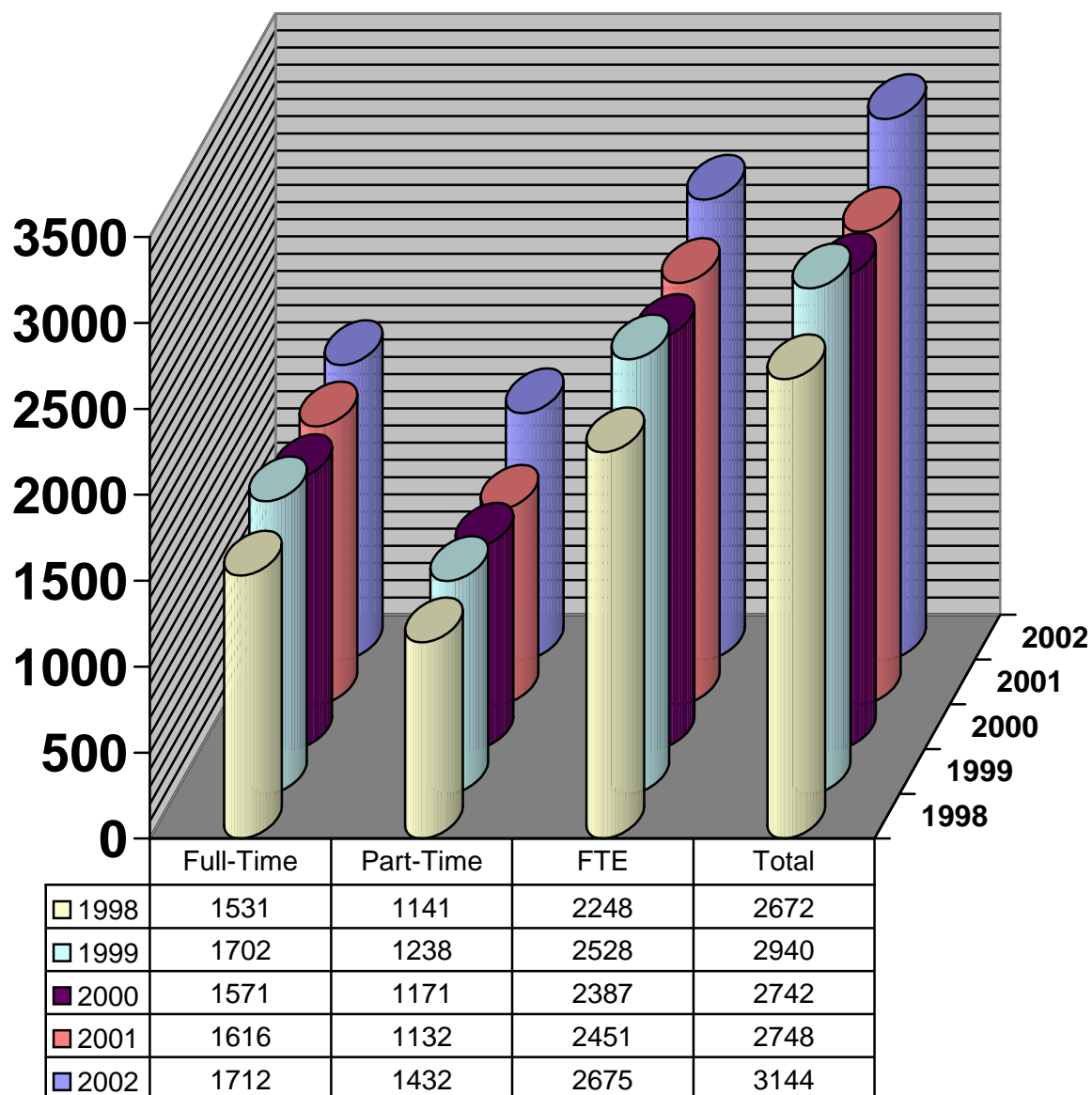
STUDENTS

BREAKDOWN BY ENROLLMENT STATUS 1996-2002



STUDENTS

ENROLLMENT BY FULL-TIME, PART-TIME, AND FTE 1998 - 2002



STUDENTS

ENROLLMENT BY CURRICULUM, RACE, AND GENDER – FALL 2002

CERTIFICATE AND ASSOCIATE DEGREE PROGRAMS

| Curriculum | Male | | | | Female | | | | Total | | | |
|----------------------|-----------|------------|-----------|------------|------------|------------|-----------|-------------|------------|-------------|-----------|-------------|
| | Black | White | Other | Total | Black | White | Other | Total | Black | White | Other | Total |
| Management | 8 | 40 | 0 | 48 | 32 | 65 | 2 | 99 | 40 | 105 | 2 | 147 |
| Office Admin | 1 | 1 | 1 | 3 | 34 | 62 | 2 | 98 | 35 | 63 | 3 | 101 |
| Computer Info Tech | 11 | 41 | 0 | 52 | 26 | 33 | 2 | 61 | 37 | 74 | 2 | 113 |
| Respiratory Care | 3 | 10 | 0 | 13 | 14 | 37 | 2 | 53 | 17 | 47 | 2 | 66 |
| PreNursing | 11 | 48 | 2 | 61 | 131 | 270 | 9 | 410 | 142 | 318 | 11 | 471 |
| Nursing | 2 | 17 | 1 | 20 | 12 | 71 | 1 | 84 | 14 | 88 | 2 | 104 |
| Radiologic Tech | 17 | 68 | 4 | 89 | 23 | 155 | 2 | 180 | 40 | 223 | 6 | 269 |
| General Studies | 5 | 32 | 0 | 37 | 21 | 58 | 2 | 81 | 26 | 90 | 2 | 118 |
| Criminal Justice | 5 | 18 | 0 | 23 | 30 | 30 | 3 | 63 | 35 | 48 | 3 | 86 |
| Paralegal Studies | 1 | 2 | 0 | 3 | 13 | 27 | 2 | 42 | 14 | 29 | 2 | 45 |
| Fire Science | 19 | 132 | 2 | 153 | 8 | 14 | 1 | 23 | 27 | 146 | 3 | 176 |
| Public and Ind. Sec. | 0 | 1 | 0 | 1 | 0 | 1 | 0 | 1 | 0 | 2 | 0 | 2 |
| TOTAL | 83 | 410 | 10 | 503 | 344 | 823 | 28 | 1195 | 427 | 1233 | 38 | 1698 |

TRANSFER PROGRAMS

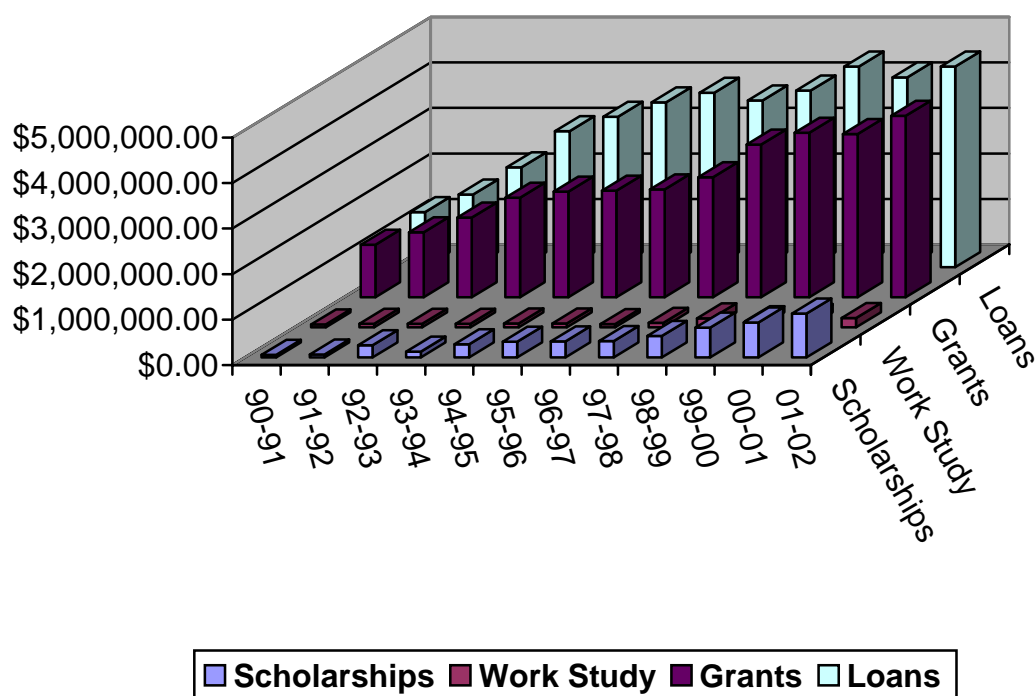
| Curriculum | Male | | | | Female | | | | Total | | | |
|--------------------|-----------|------------|----------|------------|------------|------------|-----------|------------|------------|------------|-----------|-------------|
| | Black | White | Other | Total | Black | White | Other | Total | Black | White | Other | Total |
| Business Admin | 9 | 37 | 1 | 47 | 17 | 61 | 6 | 84 | 26 | 98 | 7 | 131 |
| Education | 21 | 60 | 1 | 82 | 149 | 360 | 12 | 521 | 170 | 420 | 13 | 603 |
| Humanities/Soc Sci | 7 | 30 | 0 | 37 | 22 | 84 | 7 | 113 | 29 | 114 | 7 | 150 |
| Agriculture/Voc-ed | 3 | 36 | 0 | 39 | 4 | 11 | 1 | 16 | 7 | 47 | 1 | 55 |
| Engineering | 1 | 25 | 0 | 26 | 2 | 1 | 0 | 3 | 3 | 26 | 0 | 29 |
| Natural Sciences | 2 | 27 | 1 | 30 | 4 | 23 | 1 | 28 | 6 | 50 | 2 | 58 |
| Pre-Professional | 5 | 53 | 0 | 58 | 19 | 71 | 3 | 93 | 24 | 124 | 3 | 151 |
| TOTAL | 48 | 268 | 3 | 319 | 217 | 611 | 30 | 858 | 265 | 879 | 33 | 1177 |

UNDECIDED

| Curriculum | Male | | | | Female | | | | Total | | | |
|--------------|----------|-----------|----------|-----------|-----------|------------|----------|------------|-----------|------------|----------|------------|
| | Black | White | Other | Total | Black | White | Other | Total | Black | White | Other | Total |
| TOTAL | 7 | 79 | 0 | 86 | 38 | 141 | 1 | 183 | 45 | 220 | 4 | 269 |

STUDENTS

STUDENT FINANCIAL AID / 1990-1991 through 2001-2002



| | 90-91 | 91-92 | 92-93 | 93-94 | 94-95 | 95-96 |
|---------------------|-------------|-------------|-------------|-------------|-------------|-------------|
| Scholarships | \$57,100 | \$68,900 | \$271,500 | \$127,000 | \$291,100 | \$350,000 |
| Work Study | \$66,700 | \$77,000 | \$77,000 | \$77,000 | \$87,000 | \$87,000 |
| Grants | \$1,155,700 | \$1,427,900 | \$1,752,600 | \$2,184,200 | \$2,323,000 | \$2,338,500 |
| Loans | \$1,205,800 | \$1,593,100 | \$2,189,900 | \$2,988,100 | \$3,300,000 | \$3,622,000 |

| | 96-97 | 97-98 | 98-99 | 99-00 | 00-01 | 01-02 |
|---------------------|-------------|-------------|-------------|-------------|-------------|-------------|
| Scholarships | \$355,000 | \$361,500 | \$476,300 | \$655,100 | \$766,000 | \$965,000 |
| Work Study | \$72,800 | \$102,500 | \$201,400 | \$135,800 | \$185,400 | \$205,700 |
| Grants | \$2,368,100 | \$2,637,100 | \$3,353,200 | \$3,614,800 | \$3,586,800 | \$3,984,900 |
| Loans | \$3,827,300 | \$3,660,800 | \$3,881,000 | \$4,405,800 | \$4,170,900 | \$4,409,300 |

STUDENTS

ENROLLMENT BY LOUISIANA PARISH - FALL 2002

| | | | |
|--------------------------|------------|--------------------------|-------------|
| Acadia Parish | 717 | St. Landry Parish | 983 |
| Allen Parish | 106 | St. Martin Parish | 77 |
| Ascension Parish | 3 | St. Mary Parish | 8 |
| Avoyelles Parish | 19 | St. Tammany Parish | 13 |
| Beauregard Parish | 10 | Tangipahoa Parish | 1 |
| Caddo Parish | 1 | Terrebonne Parish | 1 |
| Calcasieu Parish | 28 | Union Parish | 1 |
| Caldwell Parish | 2 | Vermilion Parish | 89 |
| Cameron Parish | 2 | Vernon Parish | 4 |
| East Baton Rouge Parish | 32 | Washington Parish | 1 |
| East Feliciana Parish | 3 | Webster Parish | 1 |
| Evangeline Parish | 412 | West Baton Rouge Parish | 2 |
| Franklin Parish | 1 | West Feliciana Parish | 1 |
| Grant Parish | 3 | Non-Louisiana Resident | 19 |
| Iberia Parish | 59 | | |
| Iberville Parish | 7 | | |
| Jefferson Davis Parish | 127 | | |
| Jefferson Parish | 6 | Total Enrollment | 3144 |
| Lafayette Parish | 315 | | |
| Lafourche Parish | 10 | | |
| Lincoln Parish | 2 | | |
| Livingston Parish | 5 | | |
| Morehouse Parish | 1 | | |
| Natchitoches Parish | 2 | | |
| Orleans Parish | 1 | | |
| Ouachita Parish | 26 | | |
| Pointe Coupee Parish | 21 | | |
| Rapides Parish | 12 | | |
| Red River Parish | 1 | | |
| Richland Parish | 2 | | |
| Sabine Parish | 1 | | |
| St. Helena Parish | 1 | | |
| St. James Parish | 1 | | |
| St. John Parish | 4 | | |

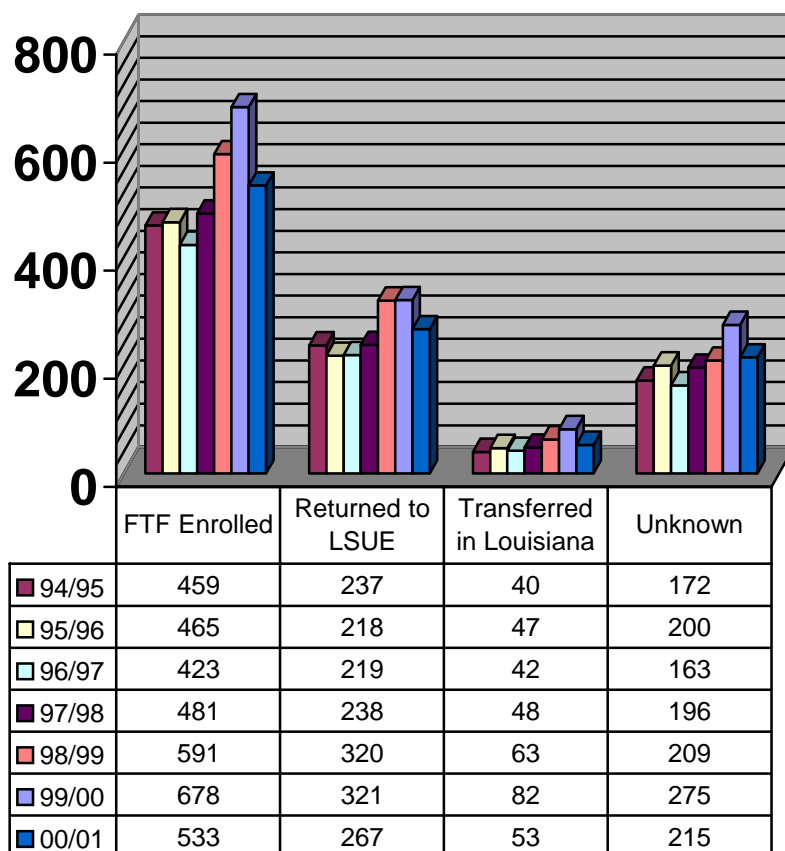


STUDENTS

FALL-TO-FALL RETENTION OF FIRST-TIME FULL-TIME STUDENTS

| Initial Enrollment | FTF Enrolled | Returned to LSUE | Transferred in Louisiana | Unknown | Retention Rate |
|--------------------|--------------|------------------|--------------------------|---------|----------------|
| 94/95 | 459 | 237 | 40 | 172 | 62.5% |
| 95/96 | 465 | 218 | 47 | 200 | 57.0% |
| 96/97 | 423 | 219 | 42 | 163 | 61.5% |
| 97/98 | 481 | 238 | 48 | 196 | 59.3% |
| 98/99 | 591 | 320 | 63 | 209 | 64.6% |
| 99/00 | 678 | 321 | 82 | 275 | 59.4% |
| 00/01 | 533 | 267 | 53 | 215 | 59.7% |

- Source: Louisiana Board of Regents Statewide Student Profile System



STUDENTS

GRADUATION RATES AND STUDENT PERSISTENCE

FIRST-TIME FULL-TIME STUDENTS

| Session | Percentage of Students Receiving the Degree in a Given Number of Years | | | | | | |
|---------|--|---------|---------|---------|---------|---------|---------|
| | Less than 3 Years | 3 years | 4 years | 5 years | 6 years | 7 Years | 8 Years |
| FALL 94 | 2.4 | 9.8 | 13.4 | 15.2 | 15.6 | 16.3 | 16.5 |
| FALL 95 | 2.3 | 8.0 | 11.9 | 13.0 | 13.6 | 13.8 | |
| FALL 96 | 3.7 | 11.5 | 14.5 | 15.2 | 13.8 | | |
| FALL 97 | 4.4 | 10.2 | 13.7 | 15.6 | | | |
| FALL 98 | 4.6 | 10.5 | 14.9 | | | | |
| FALL 99 | 3.1 | 9.9 | | | | | |

FIRST-TIME FULL-TIME ASSOCIATE DEGREE SEEKING STUDENTS

| Session | Percentage of Students Receiving the Degree in a Given Number of Years | | | | | | |
|---------|--|---------|---------|---------|---------|---------|---------|
| | Less than 3 Years | 3 years | 4 years | 5 years | 6 years | 7 Years | 8 Years |
| FALL 94 | 2.2 | 9.6 | 13.7 | 15.9 | 16.6 | 17.2 | 17.5 |
| FALL 95 | 3.0 | 9.1 | 12.4 | 13.3 | 14.2 | 14.2 | |
| FALL 96 | 3.6 | 13.7 | 18.1 | 18.9 | 19.3 | | |
| FALL 97 | 5.8 | 14.4 | 19.2 | 19.9 | | | |
| FALL 98 | 5.6 | 16.4 | 19.8 | | | | |
| FALL 99 | 8.2 | 12.4 | | | | | |

PERSISTENCE DATA ON ALL FIRST-TIME FRESHMEN STUDENTS

| Session | # FF | Students Continuing in Subsequent Years | | | | | | | |
|---------|------|---|------|------|------|------|------|------|------|
| | | 1995 | 1996 | 1997 | 1998 | 1999 | 2000 | 2001 | 2002 |
| FALL 94 | 640 | 289 | 175 | 87 | 45 | 39 | 18 | 19 | 18 |
| FALL 95 | 791 | | 299 | 195 | 98 | 73 | 44 | 27 | 35 |
| FALL 96 | 637 | | | 276 | 181 | 81 | 40 | 31 | 29 |
| FALL 97 | 599 | | | | 288 | 166 | 75 | 47 | 46 |
| FALL 98 | 718 | | | | | 376 | 196 | 105 | 63 |
| FALL 99 | 869 | | | | | | 379 | 219 | 115 |
| FALL 00 | 792 | | | | | | | 378 | 229 |
| FALL 01 | 826 | | | | | | | | 420 |

FACULTY

FACULTY PROFILE - FALL 2002

FACULTY DISTRIBUTION

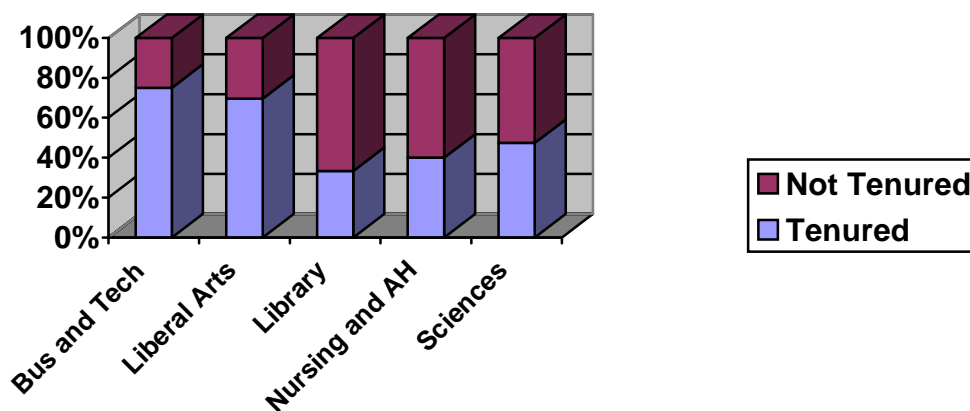
| Division | Full-time | Part-time | Total |
|---------------------------|-----------|-----------|------------|
| Business and Technology | 8 | 20 | 28 |
| Liberal Arts | 23 | 30 | 53 |
| Library | 3 | 0 | 3 |
| Nursing and Allied Health | 15 | 3 | 18 |
| Sciences | 19 | 10 | 29 |
| TOTAL | 68 | 63 | 131 |

Professional employees with academic rank were not included in these numbers

DISTRIBUTION OF FULL-TIME FACULTY BY ACADEMIC RANK

| Division | Professor | Associate Professor | Assistant Professor | Instructor | Tenured |
|---------------------------|-----------|---------------------|---------------------|------------|-----------|
| Business and Technology | 3 | 3 | 2 | 0 | 6 |
| Liberal Arts | 8 | 8 | 3 | 4 | 16 |
| Library | 0 | 2 | 0 | 1 | 1 |
| Nursing and Allied Health | 2 | 3 | 2 | 8 | 6 |
| Sciences | 5 | 2 | 6 | 6 | 9 |
| TOTAL | 18 | 18 | 13 | 19 | 38 |

Percentage of Full-Time Tenured Faculty by Division

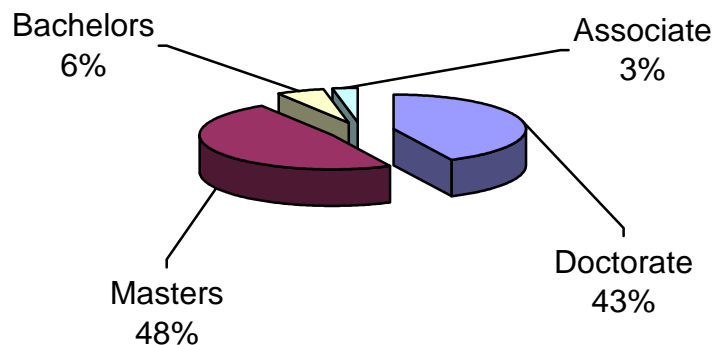


Source: Academic Affairs

FACULTY

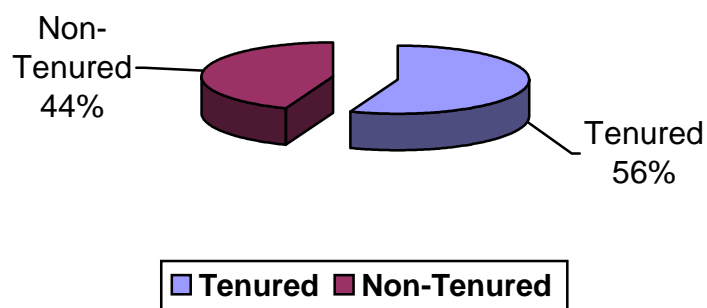
FACULTY PROFILE - FALL 2002

Highest Degree Earned by Full-Time Faculty



Source: Academic Affairs

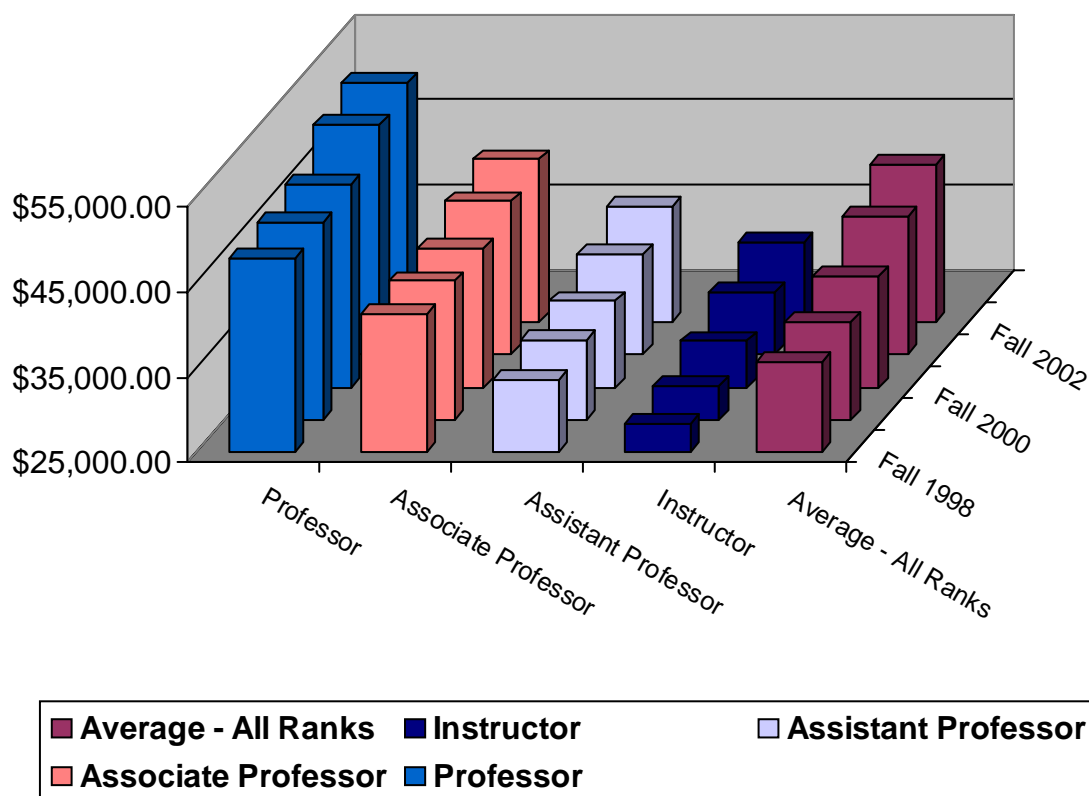
Percentage of Tenured Full-Time Faculty Members



Source: Academic Affairs

FACULTY

AVERAGE FACULTY SALARY BY RANK 1998 - 2002



| | FALL 1998 | FALL 1999 | FALL 2000 | FALL 2001 | FALL 2002 |
|----------------------------|-----------|-----------|-----------|-----------|-----------|
| Professor | \$47,660 | \$48,176 | \$48,857 | \$52,047 | \$53,205 |
| Associate Professor | \$41,124 | \$41,211 | \$41,393 | \$43,031 | \$44,168 |
| Assistant Professor | \$33,381 | \$34,251 | \$35,101 | \$36,824 | \$38,684 |
| Instructor | \$28,342 | \$28,858 | \$30,412 | \$32,410 | \$34,417 |
| Average – All Ranks | \$35,422 | \$36,486 | \$38,107 | \$41,365 | \$43,538 |

Source: Business Affairs

STAFF

STAFF PROFILE - FALL 2002

FULL-TIME

| | Male | | Female | | Total | Minorities | |
|----------------------------|-----------|-----------|-----------|-----------|-----------|------------|-----------|
| | N | % | N | % | | N | % |
| Executive / Administrative | 3 | 75 | 1 | 25 | 4 | 1 | 25 |
| Professional Non-Faculty | 9 | 33 | 18 | 67 | 27 | 12 | 44 |
| Secretarial / Clerical | 0 | 0 | 27 | 100 | 27 | 5 | 19 |
| Skilled Crafts | 7 | 100 | 0 | 0 | 7 | 3 | 43 |
| Service / Maintenance | 15 | 60 | 10 | 40 | 25 | 14 | 56 |
| TOTAL | 34 | 38 | 56 | 62 | 90 | 35 | 39 |

PART-TIME

| | Male | | Female | | Total | Minorities | |
|----------------------------|----------|----------|----------|------------|----------|------------|------------|
| | N | % | N | % | | N | % |
| Executive / Administrative | 0 | 0 | 0 | 0 | 0 | 0 | 0 |
| Professional Non-Faculty | 0 | 0 | 0 | 0 | 0 | 0 | 0 |
| Secretarial / Clerical | 0 | 0 | 3 | 100 | 3 | 0 | 0 |
| Skilled Crafts | 0 | 0 | 0 | 0 | 0 | 0 | 0 |
| Service / Maintenance | 0 | 0 | 1 | 100 | 1 | 1 | 100 |
| TOTAL | 0 | 0 | 4 | 100 | 4 | 1 | 100 |

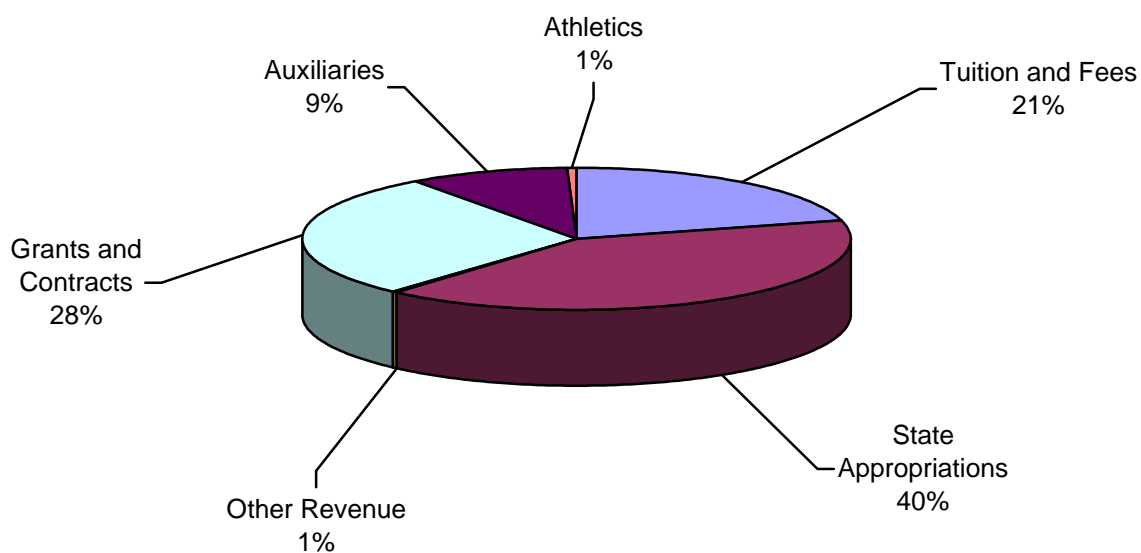
TOTAL

| | Male | | Female | | Total | Minorities | |
|----------------------------|-----------|-----------|-----------|-----------|-----------|------------|-----------|
| | N | % | N | % | | N | % |
| Executive / Administrative | 3 | 75 | 1 | 25 | 4 | 1 | 25 |
| Professional Non-Faculty | 9 | 33 | 18 | 67 | 27 | 12 | 44 |
| Secretarial / Clerical | 0 | 0 | 30 | 100 | 30 | 5 | 17 |
| Skilled Crafts | 7 | 100 | 0 | 0 | 7 | 3 | 43 |
| Service / Maintenance | 15 | 58 | 11 | 42 | 26 | 15 | 58 |
| TOTAL | 34 | 36 | 60 | 64 | 94 | 36 | 38 |

Source: Human Resources

BUDGET

BUDGETED REVENUE – FY 02/03

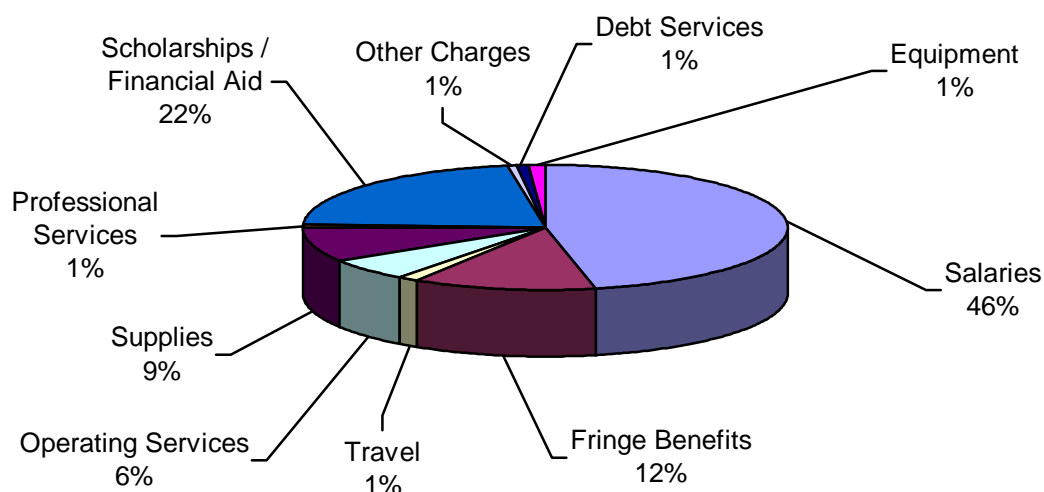


| Category | Unrestricted | Restricted | Total |
|----------------------|--------------------|--------------------|---------------------|
| Tuition and Fees | \$3,323,922 | | \$3,323,922 |
| State Appropriations | \$6,426,571 | | \$6,426,571 |
| Other Revenue | \$81,900 | | \$81,900 |
| Grants and Contracts | | \$4,500,000 | \$4,500,000 |
| Auxiliaries | | \$1,472,924 | \$1,472,924 |
| Athletics | | \$108,000 | \$108,000 |
| TOTAL | \$9,832,393 | \$6,080,924 | \$15,913,317 |

Source: Business Affairs

BUDGET

BUDGETED EXPENDITURES – FY 02/03

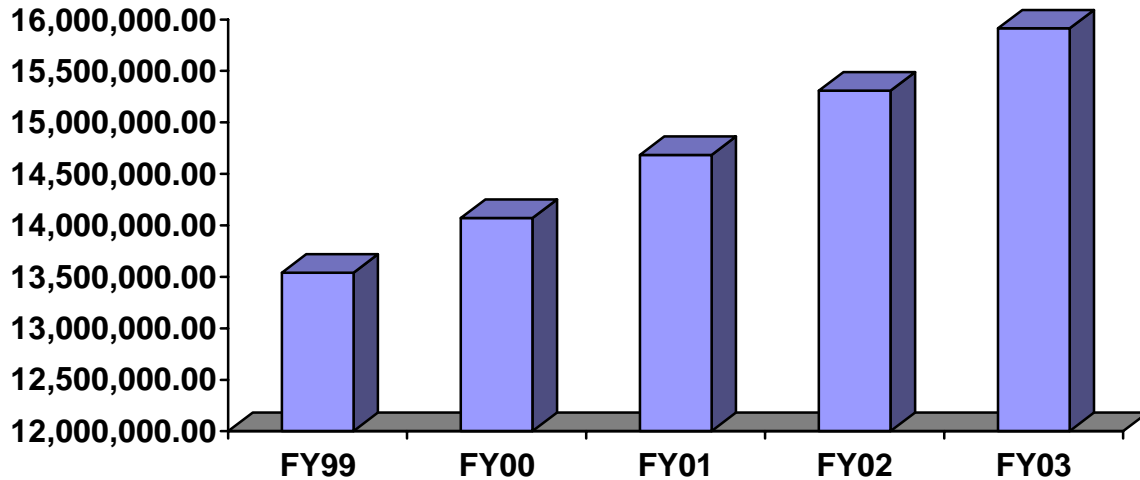


| Category | Unrestricted | Auxiliary | Restricted | Total |
|------------------------------|--------------------|--------------------|--------------------|---------------------|
| Salaries | \$6,643,500 | \$211,624 | \$587,432 | \$7,442,556 |
| Fringe Benefits | \$1,766,516 | \$29,800 | \$124,425 | \$1,920,741 |
| Travel | \$121,406 | \$38,000 | \$47,500 | \$206,906 |
| Operating Services | \$847,680 | \$63,500 | \$42,873 | \$953,053 |
| Supplies | \$263,773 | \$1,084,000 | \$93,454 | \$1,414,227 |
| Professional Services | \$22,302 | \$1,500 | \$95,217 | \$119,019 |
| Scholarships / Financial Aid | \$107,683 | | \$3,367,014 | \$3,474,697 |
| Other Charges | \$15,480 | \$17,500 | \$58,121 | \$91,101 |
| Debt Services | | \$135,000 | | \$135,000 |
| Equipment | \$71,053 | | \$83,964 | \$155,017 |
| TOTAL | \$9,832,393 | \$1,580,924 | \$4,500,000 | \$15,913,317 |

Source: Business Affairs

BUDGET

REVENUE – ALL SOURCES FY 1999 - 2003

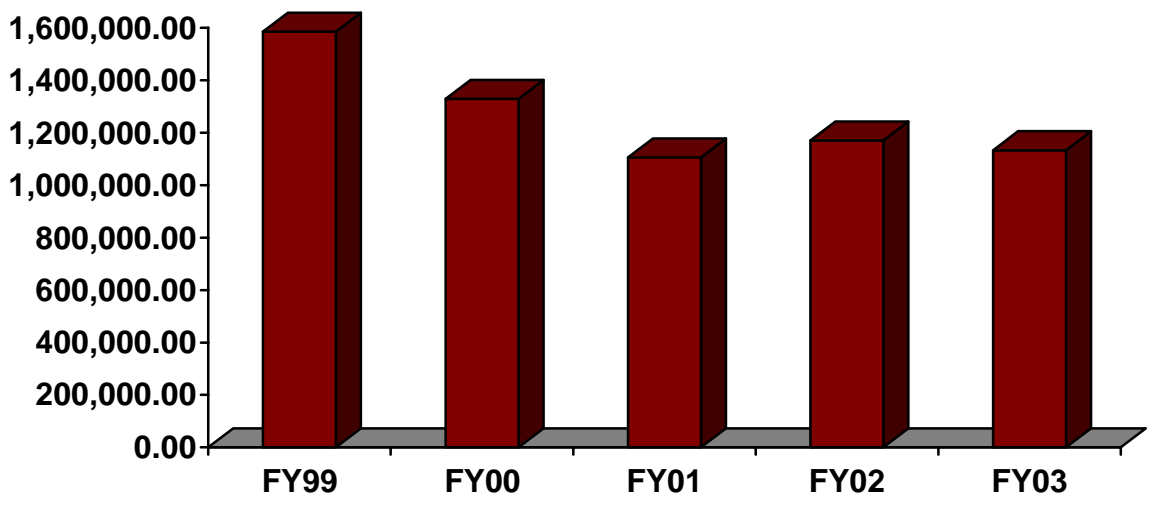


| Fiscal Year | Unrestricted | Auxiliary | Restricted | Total |
|---------------------------|--------------|-------------|-------------|--------------|
| 98/99 | \$7,220,229 | \$1,594,136 | \$4,725,842 | \$13,540,207 |
| 99/00 | \$7,432,786 | \$1,884,862 | \$4,755,244 | \$14,072,892 |
| 00/01 | \$7,906,948 | \$1,816,682 | \$4,961,747 | \$14,685,377 |
| 01/02 | \$8,597,522 | \$1,901,282 | \$4,808,661 | \$15,307,465 |
| 02/03 (<i>Budgeted</i>) | \$9,832,393 | \$1,580,924 | \$4,500,000 | \$15,913,317 |

Source: Business Affairs

GRANTS AND CONTRACTS

GRANTS AND CONTRACT AWARDED FY 1999 - 2003

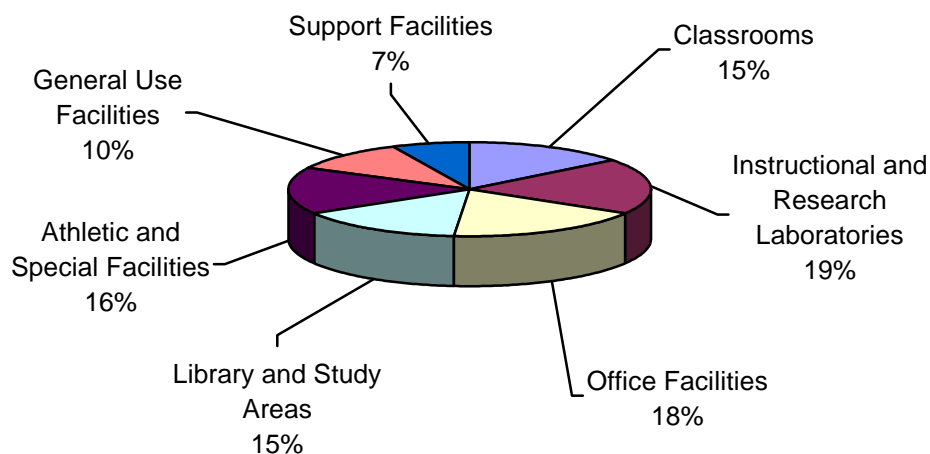


| Fiscal Year | Amount |
|------------------|-------------|
| 98/99 | \$1,585,048 |
| 99/00 | \$1,328,901 |
| 00/01 | \$1,105,864 |
| 01/02 | \$1,170,028 |
| 02/03 (Budgeted) | \$1,132,986 |

Source: Business Affairs

Physical Facilities

ASSIGNABLE SPACE BY TYPE

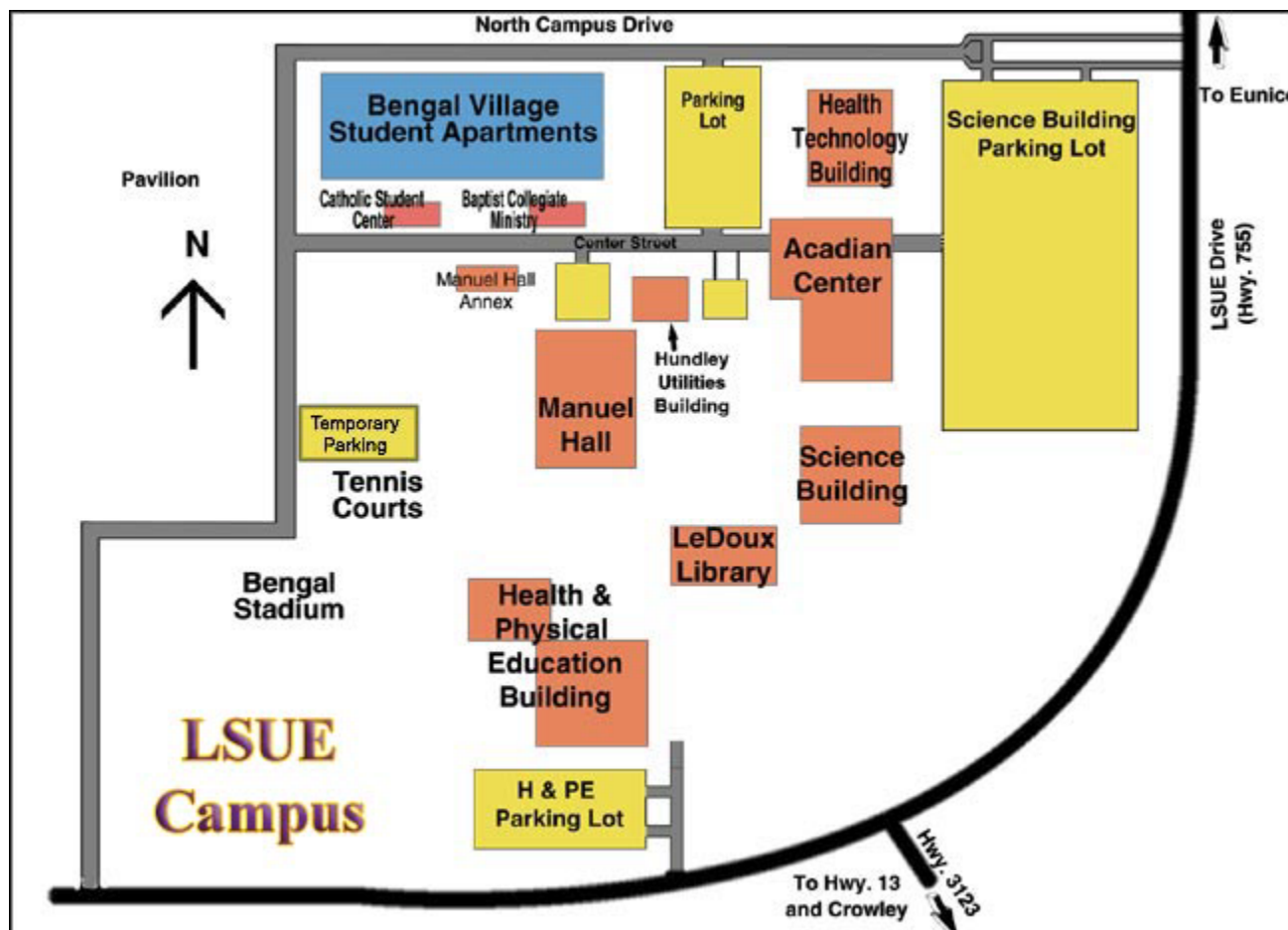


| Use of Space | Assignable Square Feet | % of Total |
|--|------------------------|----------------|
| Classrooms | 24,789 | 13% |
| Instructional and Research Laboratories | 38,836 | 20% |
| Office Facilities | 34,358 | 18% |
| Library and Study Areas | 28,585 | 15% |
| Athletic and Special Facilities | 31,329 | 16% |
| General Use Facilities (food service, lounge, exhibition areas) | 24,458 | 13% |
| Supporting Facilities (warehouses, computer facilities, physical plant) | 9,546 | 5% |
| TOTAL | 191,901 | 100.00% |

* Source: Board of Regents Facilities Inventory System: Fall 2001

Physical Facilities

UNIVERSITY CAMPUS



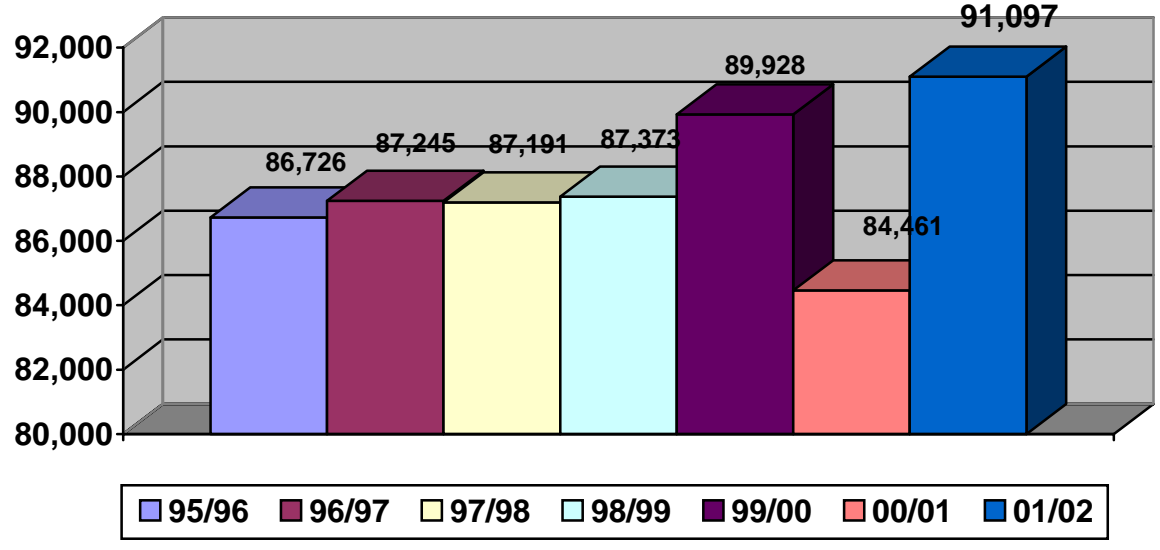
Main Campus Offices

- Admissions, Manuel Hall, Room 102
- Business and Technology Division, Manuel Hall, Room 205
- Business Affairs Office, Science Building, Room 111
- Chancellor's Office, Science Building, Room 105
- Continuing Education Office, Health and PE Building, Room 109
- Financial Aid Office, Acadian Center, Room 110
- Information Technology / Institutional Research, Manuel Hall, Room 105
- Liberal Arts Division, Manuel Hall, Room 147
- Nursing and Allied Health Division, Health Technology Building, Room 104
- Registrar, Manuel Hall, Room 102
- Sciences Division, Science Building, Room 207
- Student Affairs Office, Acadian Center, Room 112

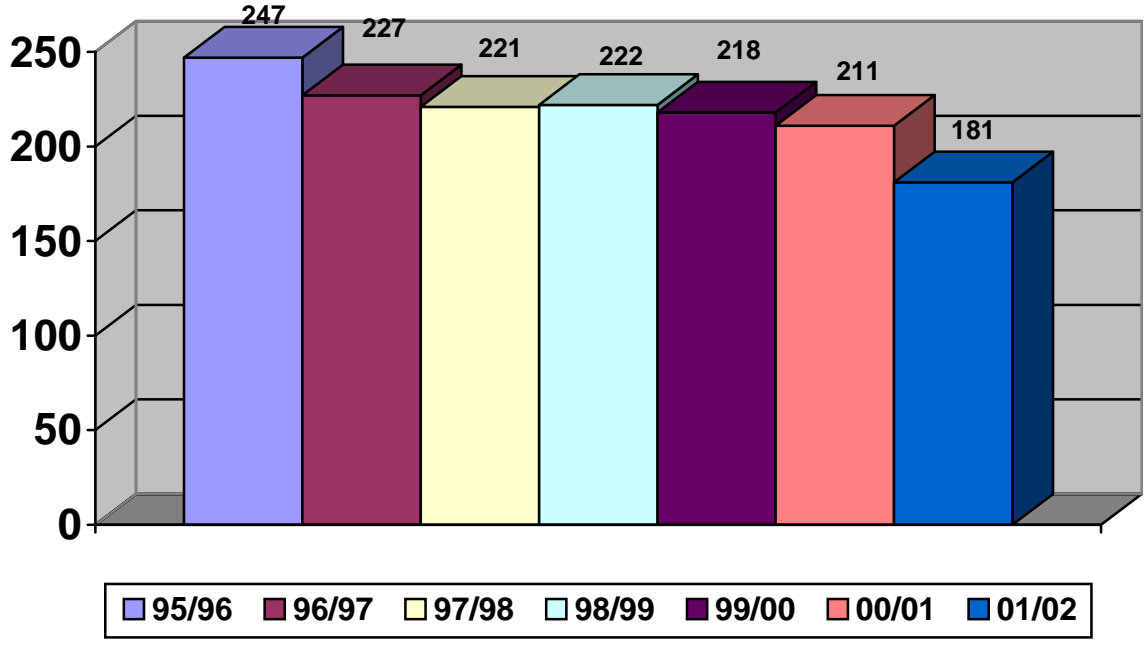
LEDOUX LIBRARY

LIBRARY HOLDINGS - 1995/1996 THROUGH 2001/2002

Volumes



Serial Subscriptions



LEDOUX LIBRARY

LIBRARY OVERVIEW - 1995/1996 THROUGH 2001/2002

LIBRARY HOLDINGS

| Year | Volumes | Subscriptions | Federal Documents |
|-----------|---------|---------------|-------------------|
| 1995/1996 | 86,726 | 247 | 126,142 |
| 1996/1997 | 87,245 | 227 | 127,851 |
| 1997/1998 | 87,191 | 221 | 124,257 |
| 1998/1999 | 87,373 | 222 | 124,142 |
| 1999/2000 | 89,928 | 218 | 125,724 |
| 2000/2001 | 84,641 | 211 | 128,188 |
| 2001/2002 | 91,097 | 181 | 130,433 |

CIRCULATION

| Year | 95/96 | 96/97 | 97/98 | 98/99 | 99/00 | 00/01 | 01/02 |
|-------------------|--------|-------|-------|-------|-------|-------|-------|
| Number of Volumes | 10,536 | 8,789 | 8,778 | 7,976 | 7,018 | 6,223 | 5,192 |

INTERLIBRARY LOAN

| Year | 95/96 | 96/97 | 97/98 | 98/99 | 99/00 | 00/01 | 01/02 |
|----------------------|-------|-------|-------|-------|-------|-------|-------|
| Loaned to Others | 112 | 60 | 21 | 21 | 1 | 360 | 2 |
| Borrowed from Others | 242 | 216 | 202 | 202 | 250 | 0 | 55 |

* Source: LSUE Library